



**Marie
Skłodowska-
Curie Actions**

INFO DAY

MSCA 2024

POSTDOCTORAL FELLOWSHIPS

University of Montenegro, April 11, 2024

Table of CONTENTS

01

Introduction

02

Indicative Timeline

03

Types of PFs

04

Who can apply

05

How to apply

06

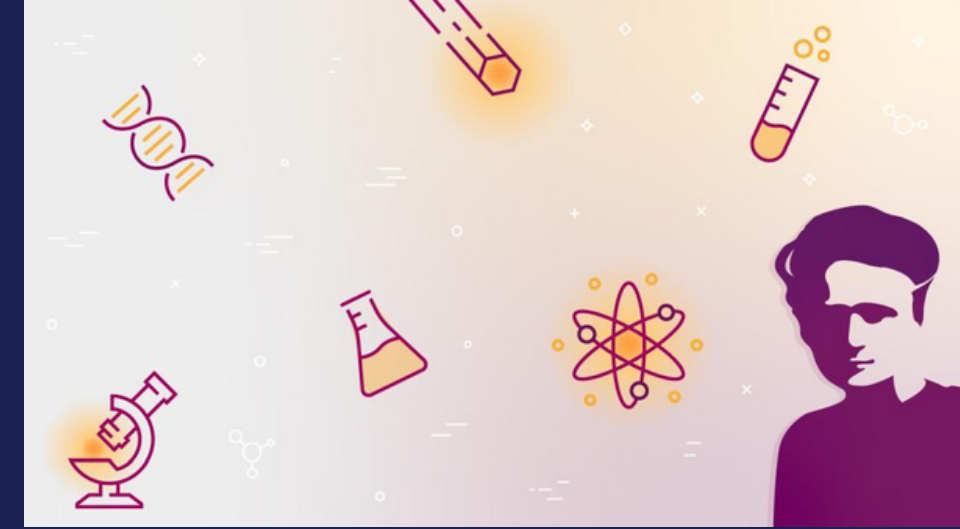
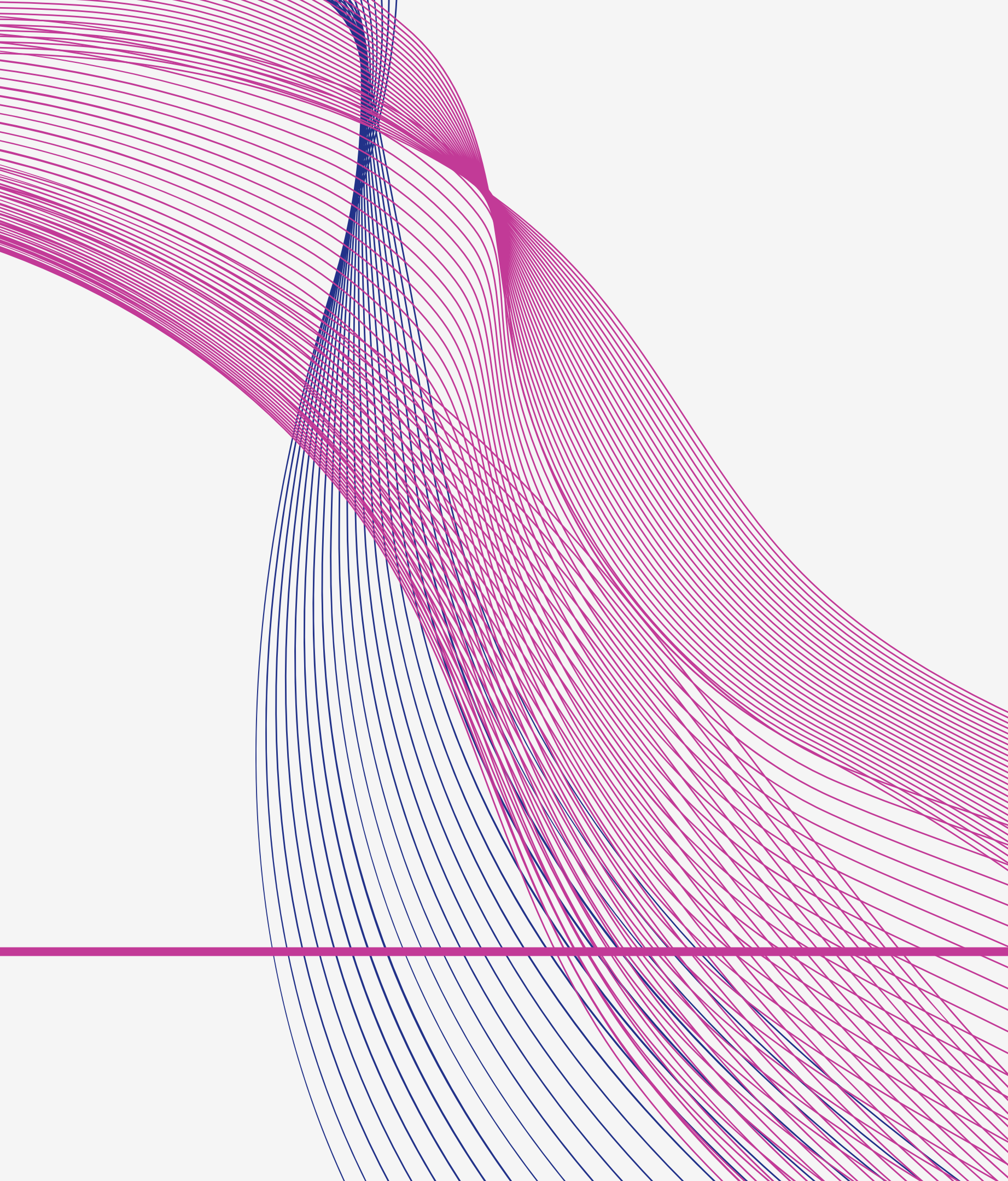
What does funding
cover

07

Relevant
documents and
information

08

Ulysses Initiative



INTRODUCTION

MSCA Postdoctoral Fellowships enhance the creative and innovative potential of researchers holding a PhD and who wish to acquire new skills through advanced training, international, interdisciplinary and inter-sectoral mobility. MSCA Postdoctoral Fellowships will be open to excellent researchers of any nationality.

- Excellent Science;
- All fields of science;
- Bottom-up approach.

INDICATIVE TIMELINE



**INDICATIVE BUDGET
EUR 417.18 MILLION**

Types OF MSCA PF

● European Postdoctoral Fellowships

are open to researchers of any nationality who wish to engage in R&I projects by either coming to Europe from any country in the world or moving within Europe. The standard duration of these fellowships must be between 12 and 24 months.

● Global Postdoctoral Fellowships

are open to European nationals or long-term residents who wish to engage in R&I projects with organisations outside EU Member States and Horizon Europe Associated Countries. These fellowships require an outgoing phase of minimum 12 and maximum 24 months in a non-associated Third Country, and a mandatory 12-month return phase to a host organisation based in an EU Member State or a Horizon Europe Associated Country

BOTH TYPES OF FELLOWSHIPS MAY ALSO INCLUDE SHORT-TERM SECONDMENTS ANYWHERE IN THE WORLD DURING THE FELLOWSHIP (EXCEPT DURING THE RETURN PHASE OF A GLOBAL FELLOWSHIP).

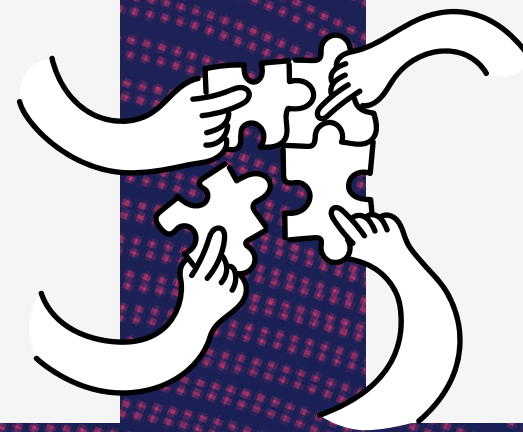
WHO CAN APPLY FOR POSTDOCTORAL FELLOWSHIPS?

Researchers

with PhD.

Host institution

- University,
- Research Institution,
- Business,
- SME or
- other organisation based in an EU Member State or Horizon Europe Associated Country.



Researchers interested in PFs:

01

Should have a PhD degree at the time of the deadline for applications;

02

Must have a maximum of 8 years experience in research, from the date of the award of their PhD degree;

03

Mobility Rule:

Reserachers must not have resided or carried out their main activity (work, studies, etc.) in the country of the beneficiary (for European Postdoctoral Fellowships), or the host organisation for the outgoing phase (for Global Postdoctoral Fellowships) for more than 12 months in the 36 months immediately before the call deadline.

- AS FROM 2022, RESUBMISSION RESTRICTIONS WILL APPLY FOR APPLICATIONS THAT RECEIVED A SCORE **BELOW 70%** THE PREVIOUS YEAR;
- SEALS OF EXCELLENCE WILL BE AWARDED TO APPLICATIONS WITH A TOTAL SCORE EQUAL TO OR **HIGHER THAN 85%**, BUT WHICH CANNOT BE FUNDED DUE TO LACK OF BUDGET AVAILABLE UNDER THE CALL

HOW TO APPLY



Look for your
Host Institution.



Develop an
application jointly
with your chosen
host organisation.



Submit your application to an
open funding call published
on the Funding and Tender
Opportunities Portal

WHAT DOES THE FUNDING COVER

MSCA Postdoctoral Fellowships	Contributions for the recruited researcher per person-month					Institutional unit contributions per person-month	
	Living allowance	Mobility allowance	Family allowance (if applicable)	Long-term leave allowance (if applicable)	Special needs allowance (if applicable)	Research, training and networking contribution	Management and indirect contribution
	EUR 5 080	EUR 600	EUR 660	EUR 5 680 x % covered by the beneficiary	requested unit ⁹³ x (1/number of months)	EUR 1 000	EUR 650

MSCA matchmaking platform

Home Fellows Supervisors Institutions Companies NCPs EEN advisors All Participants

RENEWAL
MAY2022 - MAY2024

MSCA matchmaking platform

THE VIRTUAL MARIE SKLODOWSKA-CURIE ACTIONS
MATCHMAKING PLATFORM

MSCA-NET

Info How it works **PF call** DN call SE call COFUND call MSCA and Citizens Widening opportunities FAQ Contact

Objective of Postdoctoral Fellowships

The objective of PFs is to support researchers' careers and foster excellence in research. The Postdoctoral Fellowships action targets researchers holding a PhD who wish to carry out their research activities abroad, acquire new skills and develop their careers. PFs help researchers gain experience in other countries, disciplines and non-academic sectors.

Register now
Open until 30 April 2024

ORGANISED BY

MSCA-NET

enterprise europe network

EUROPEAN UNION

fundación para el conocimiento madrid

NCP WIDERA.NET

Relevant documents & INFORMATION

All relevant documents are available on the dedicated call page on the Funding and Tender Opportunities Portal, including

- MSCA work programme and general annexes;
- guide for applicants;
- specific FAQs;
- application and evaluation forms;
- online manual on how to submit an application;
- guidelines on the calculation of 8-years research experience in Postdoctoral Fellowships under Horizon Europe;
- self-assessment tool for the calculation of the 8-years research experience.



Ulysseus

EUROPEAN UNIVERSITY

SUPPORT

- Networking between postdoc candidates & mentors (supervisors);
- Online master class “How to make winning proposals”
- Short-term mobility for postdoc candidates, to meet their mentors and Host Institution.

Online form for Expression of Interest available at website.

***currently or in the last 3 years employed/enrolled at one of the full or associate partners of the Ulysseus alliance.**



MARTINA LUKIĆ

MSCA NCP
Ministry of Education, Science and Innovation



www.gov.me/mps



martina.lukic@mpni.gov.me



Rimski trg bb, Podgorica

FILIP PETROVIĆ

MSCA NCP
University of Montenegro

www.ucg.ac.me



fpetrovic@ucg.ac.me



Cetinjska 2, Podgorica



*Thank
You*